



SiLine[®] Snack and Combi S

SiLine[®] Combi S



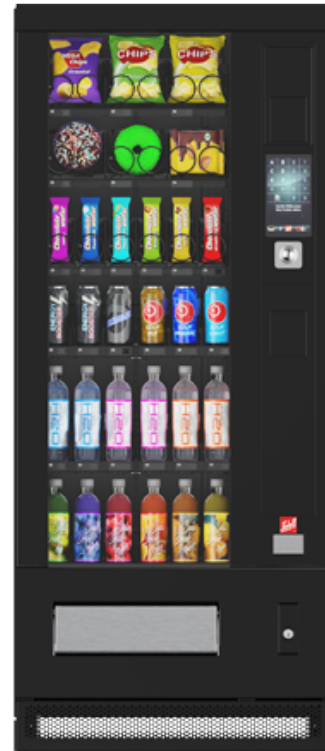
SiLine® Snack and Combi S

SiLine® Combi S

MADE
IN
GERMANY

Introduction

- Vending of confectionery, snacks, fresh food, drinks and non-food items from spiral and pusher shelves
- High capacity: up to 7 shelves
- Fits in a Vending line
- Shelves and spirals made from powder-coated metal
- SiLine® Combi: Pushers suitable for products with a diameter up to 72 mm
- Uniform installation area for the payment systems
- Modular design – especially easy to service and recycle



Overview

Dimensions:	1,830* x 780 x 895 mm (height x width x depth)**
Weight:	approx. 300 kg (without products, depending on the layout)
Electrical connection values:	220 - 230 V / 50 Hz / min. 10 A
Power consumption:	400 W (varies depending on the type of chiller unit)
Spirals per shelf:	6
Pusher per shelf:	6

* 1,844 mm for Design VA with Design package B

**Deviations in the housing dimensions are possible due to add-on parts and accessories.

Design variants

Design panel

- Design VA = Lower design panel made from Stainless steel
- Design RA = Lower design panel RAL painted

Cabinet colours

- Pure white (RAL 9010)
- White aluminum (RAL 9006)
- Jet black (RAL 9005)

Optional:

The standard design VA can be added with the design package A or B.
Design RA can be complemented with Design package A.

Design package A includes:

- LED decoration panel

Design package B includes:

- LED-Decoration strips above and below the glass panel
- Upper door decoration panel in stainless steel
- Kickplate in stainless steel

All design variants can be found in the brochure.

Options and accessories

- Lift
- Light barrier



Sielaff GmbH & Co. KG
Automatenbau Herrieden
Münchener Str. 20
91567 Herrieden
Germany

Phone: +49 9825 18-0
Telefax: +49 9825 18-311155
info@sielaff.de
www.sielaff.com

See here for our
company profile video



■ MADE
IN
■ GERMANY